

# Newington-Dover 11238L

January 27, 2012 Update

## Dover Side - COMPLETE Bridge Work - Phase 1 Concrete

Cianbro Corporation has completed the Phase 1 concrete work at Piers 5-8.

Phase 1 builds the easterly 2/3 of the bridge.

Phase 2 will build the westerly 1/3 of the bridge starting in the summer/fall of 2012.



**Dover Side -  
ONGOING  
Roadwork -  
Future Rte 16 SB**

Roadway construction for the SB Rte 16 approach to the new bridge has been partially completed.

Roadwork has been shut down for the winter.



# Dover Side – ONGOING Bridge Work – Phase 1 Structural Steel

Cianbro Corporation continues installation of the Phase 1 structural steel starting from the north abutment working south to Pier 5.

Phase 1 installs the 4 easterly girders of the bridge.

Completion of the Phase 1 structural steel to Pier 5 is expected to be completed in the first week of February.



# Dover side – Structural Steel

End of Phase 1 girders at Pier 5



Girders 1-4 progressing toward Pier 5



# Newington Side - ONGOING Bridge Work - Phase 1 Concrete

Cianbro continues concrete work on the south end constructing Piers 1-4 for Phase 1.

Column work at Piers 1-4 is complete.

The Pier 1, 2, & 3 caps and struts have been completed.

Phase 1 concrete work at Piers 1-4 will be completed in the first week of February

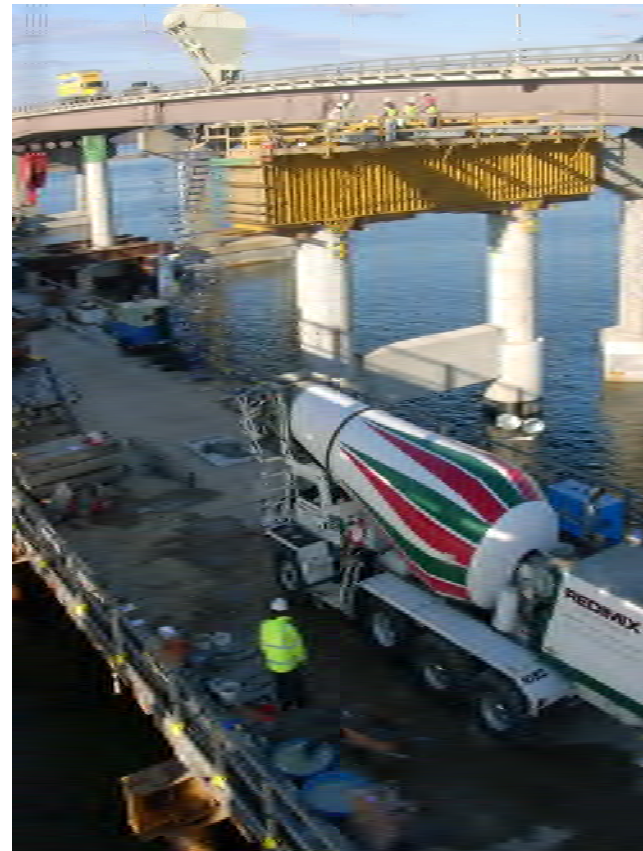


# Newington Side - Work

**Removal of Trestle Finger at Pier 4.**

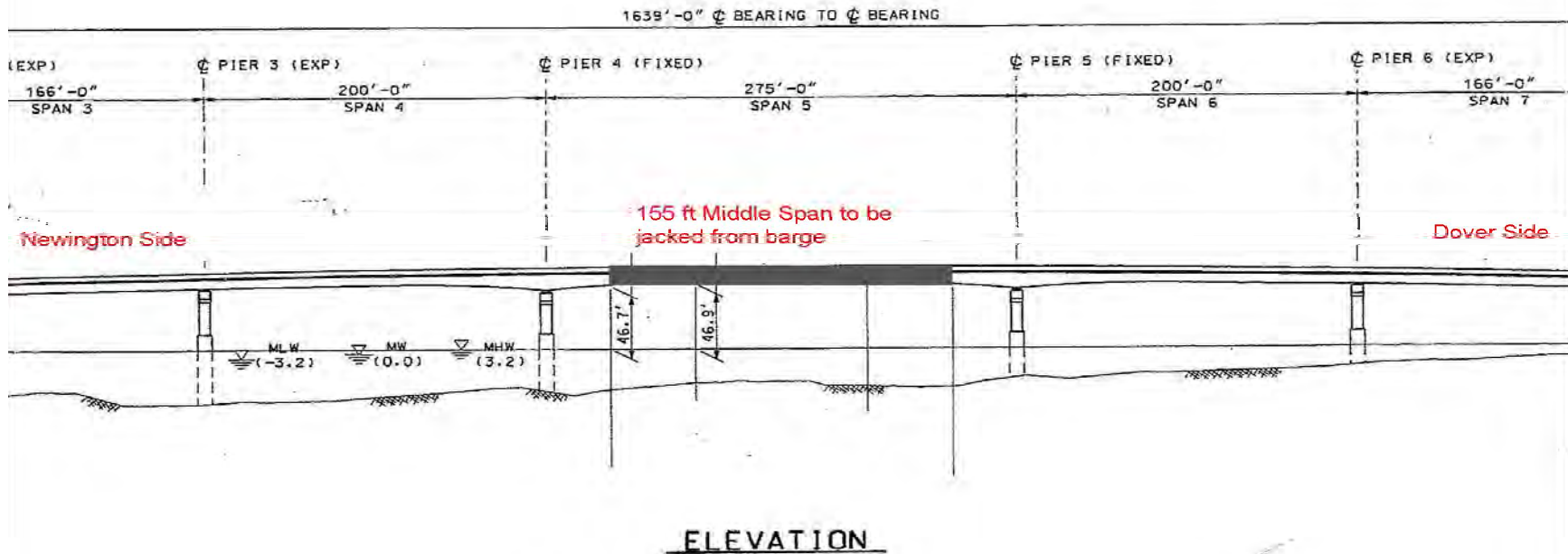


**Concrete Placement at Pier 3 Cap**



## Future Completion of Phase 1 Structural Steel Erection

Cianbro will erect the structural steel from Abutment B to Pier 5 and from Abutment A to Pier 4 leaving a gap over the main navigational channel. In April of 2012 the main 155 ft span will be barged into place and lifted with strand jacks to complete the Phase 1 Structural Steel.





# Newington-Dover 11238L Contract

- Upcoming work:
  - Dover side:
    - Completion of Phase 1 Structural Steel to Pier 5.
    - Mobilize equipment to Newington Side.
  - Newington side:
    - Complete Phase 1 concrete pier construction at Piers 1-4.
    - Begin Phase 1 structural steel erection from the south abutment to Pier 4.