

Newington-Dover 11238L

June 15, 2012 Update

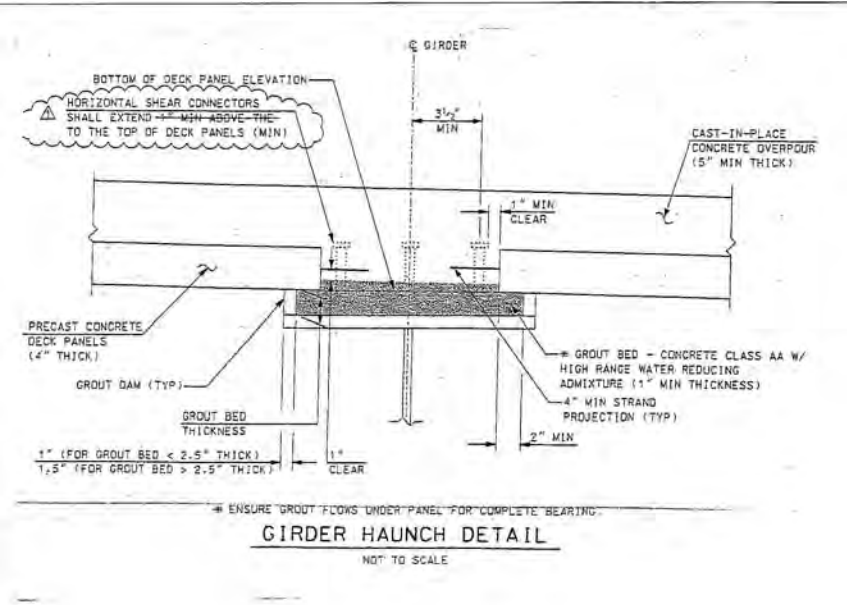


Complete – Phase 1 Structural Steel

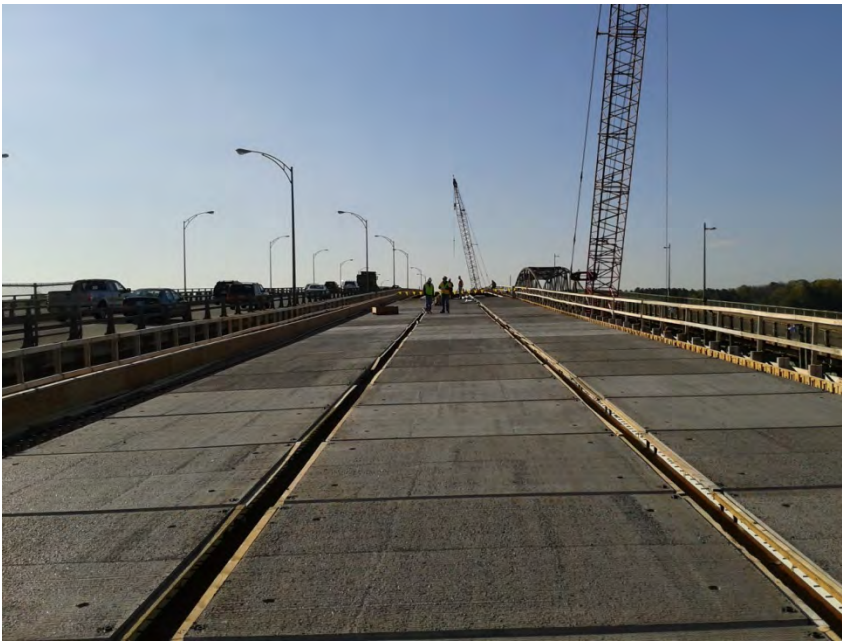
On April 17, 2012, Cianbro Corporation erected the middle span of the structural steel from a barge. This span connected the Newington and Dover halves of the bridge.



4" Thick Precast Concrete Deck Panels have been installed over the entire length of the bridge. These panels will be covered by a 5" thick reinforced concrete overlay.



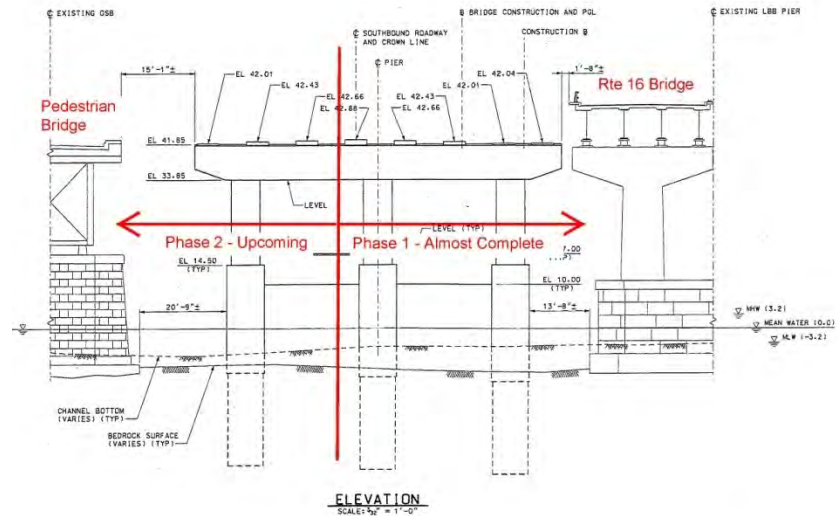
Once the Precast Concrete Panel installation was complete, concrete was placed between the panels to lock them into place.



Epoxy coated steel reinforcement has been installed over the entire bridge deck in preparation for the 5" concrete overlay which will be completed by the end of June.



Work on Phase 1 is almost complete. Cianbro Corporation will start Phase 2 work in July of 2012. Phase 2 will build the west half of the bridge and includes additional pier construction work.



Newington-Dover 11238L Contract

- Upcoming work:

- Bridge:

- Placement of Phase 1 Bridge Deck concrete overlay
 - Scheduled to be completed 6/21/12.
 - Prepare for the start of Phase 2 Pier Construction and removal of work trestle.

- Dover side:

- Roadway approach construction is scheduled for mid to late summer 2012.