

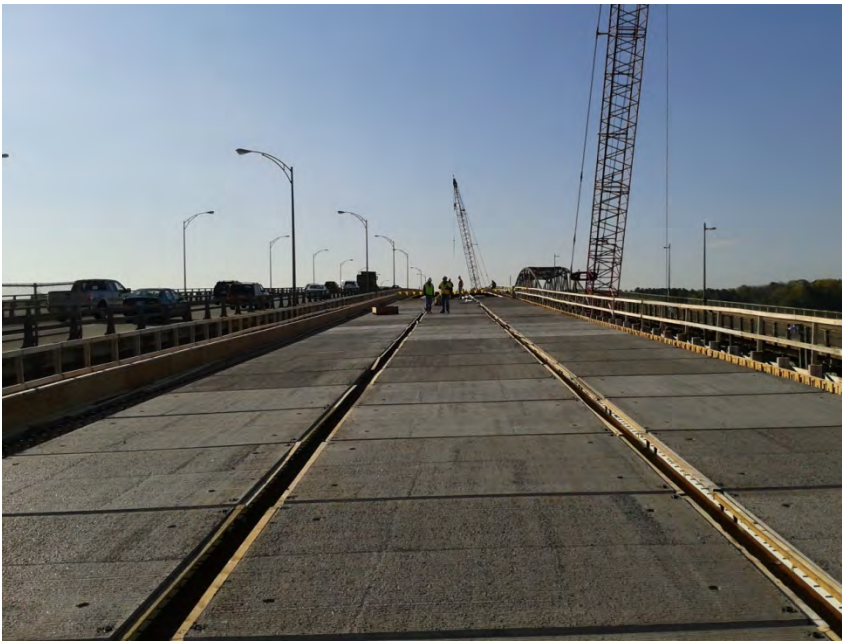
Newington-Dover 11238L

July 30, 2012 Update



Complete – Phase I Bridge Deck Precast Deck Panels

The 4" thick Precast Concrete Deck Panel installation was completed in late May, 2012. These panels will be overlaid with 5" of reinforced concrete.



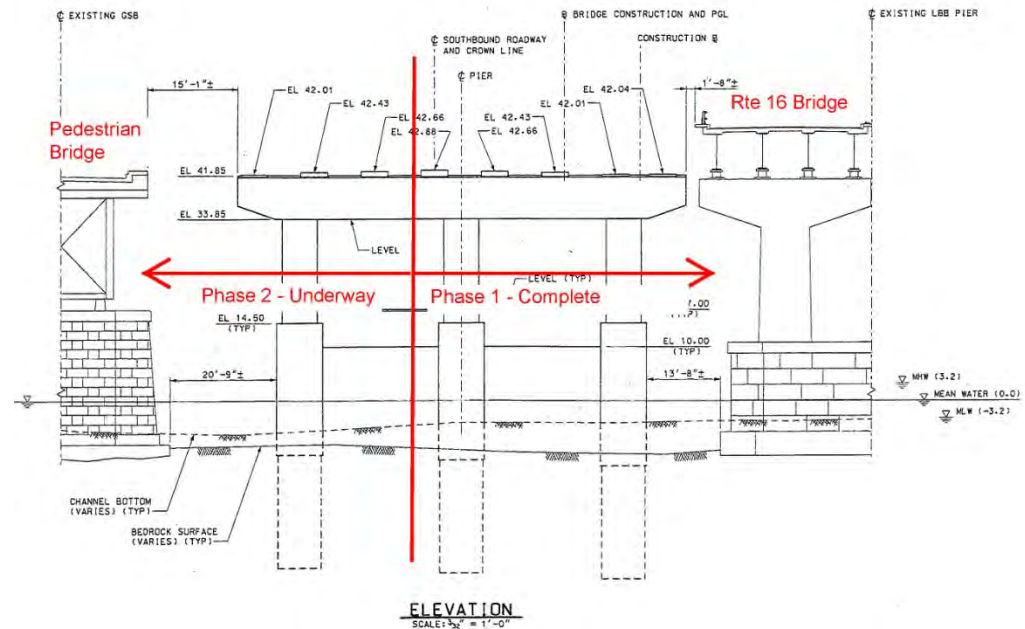
Complete – Phase I Bridge Deck

On June 21, 2012, Cianbro Corporation and their subcontractors completed the concrete bridge deck overlay placements for Phase I. The Phase I bridge deck comprises half of the total width of the proposed bridge. This surface will ultimately receive a waterproofing membrane and pavement to provide the final driving surface.



Work Underway – Phase 2 Pier Concrete Work

Phase 2 constructs the westerly half of the bridge including the construction of one additional support column and an additional section of the pier cap.



Work Underway – Trestle Removal

The temporary work trestle, which has provided access for the Phase 1 bridge construction, will be systematically disassembled in conjunction with the construction of the Phase 2 piers.



Newington-Dover 11238L Contract

- Upcoming work:
 - Bridge:
 - Construction of the Phase 2 piers working from the center of the channel toward the shoreline on each half of the bridge.
 - Removal of the temporary work trestle.
 - Roadwork:
 - Roadway approach construction on the Dover side is scheduled to begin in mid to late August 2012.